

110

WEST C STREET

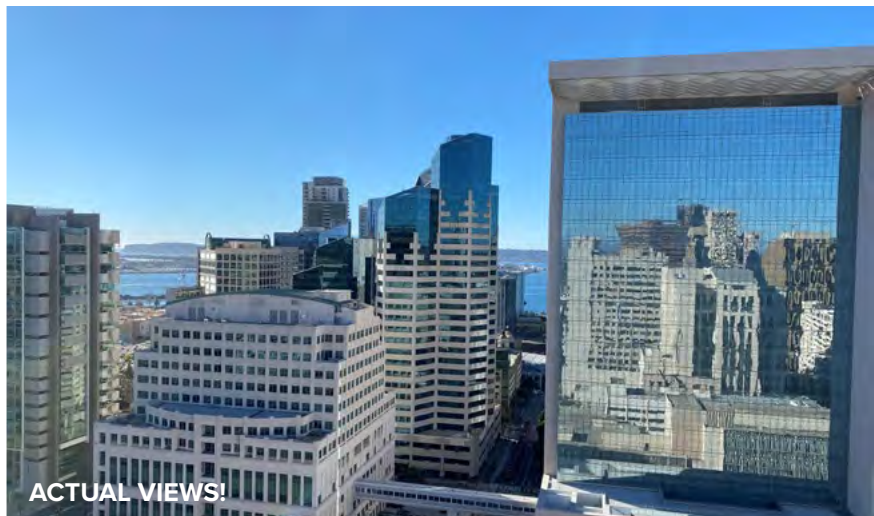
SAN DIEGO

Jones Lang LaSalle Brokerage, Inc., Real estate license #01856260



IN THE HEART OF DOWNTOWN

110 West C Street is a 23-story office building located in the heart of San Diego's central business hub. The building boasts immediate trolley and freeway access and is in walking distance to the Federal Courthouse, City Hall and Civic Center. The central location provides tenants convenient access to all of the retail and dining amenities Downtown San Diego has to offer.



PROJECT HIGHLIGHTS



177,725 S.F.
OFFICE



23
STORIES



PREMIER FIRST AND
FRONT STREET LOCATION



CONVENIENT
TRANSPORTATION ACCESS



NEARBY DINING
AND RETAIL



ON-SITE
PARKING STRUCTURE



VIEWS OF THE
SAN DIEGO BAY
AND DOWNTOWN





110 West C Street

CORE DISTRICT

- SANTA FE DEPOT**
- HALL OF JUSTICE**
- STATE COURTHOUSE**
- FEDERAL COURTHOUSES**
- CIVIC CENTER**

HORTON PLAZA

GASLAMP DISTRICT

EAST VILLAGE

MARINA

PETCO PARK

IDEAL CENTRAL LOCATION

Located on the corner of First and Front Street, 110 West C Street is a short walk to the State and Federal courthouses, Amtrak and Trolley, hotels and fine dining. You'll also have quick access to major freeways and a five-minute ride to the San Diego International Airport.

20+
RESTAURANTS
AND BARS
WITHIN 2 MILES

<0.1
MILES TO
TROLLEY LINE

4
MINUTE WALK TO
CIVIC CENTER

2.5
MILES TO SAN
DIEGO AIRPORT

2
MINUTE WALK
TO CENTRAL
COURTHOUSE

5
BLOCKS TO
SANTA FE DEPOT



PETCO PARK



COFFE SHOPS



EATERIES

KEY

TRAIN

TROLLEY LINE

OCEANSIDE TRANSIT CENTER

VISTA

CARLSBAD VILLAGE

CARLSBAD

SAN MARCOS

ESCONDIDO

CARLSBAD VILLAGE

ENCINITAS

ENCINITAS

SOLANA BEACH

SOLANA BEACH

56

TORREY PINES

SORRENTO VALLEY

SORRENTO MESA

UTC

LA JOLLA

52

SAN DIEGO - OLD TOWN TRANSIT CENTER

MISSION VALLEY

SAN DIEGO - SANTA FE DEPOT

DOWNTOWN

94

LOCAL TRANSPORTATION



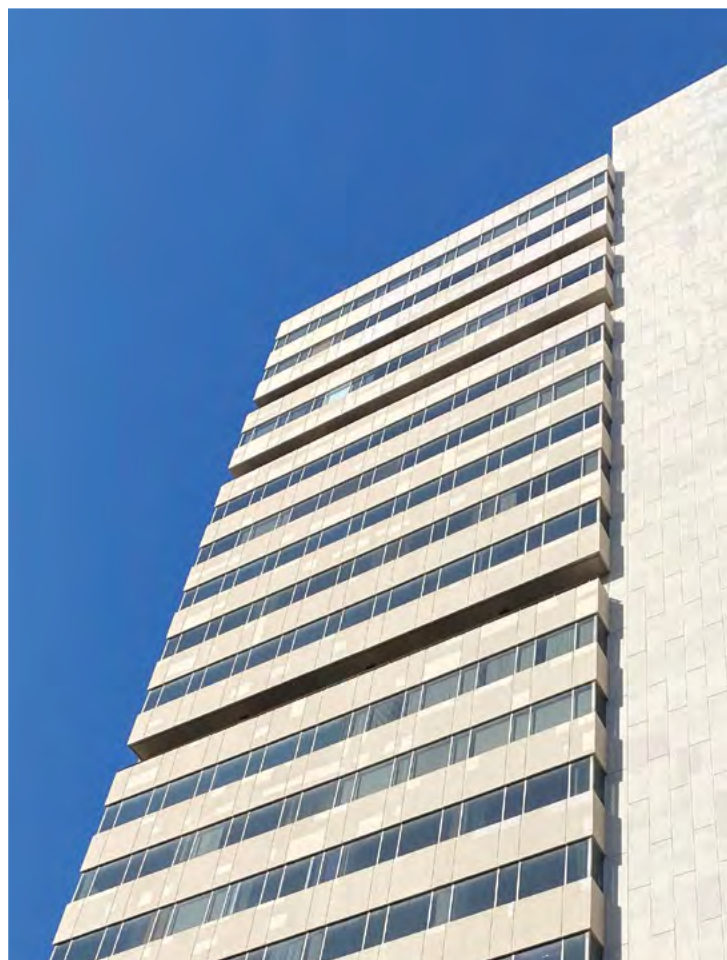
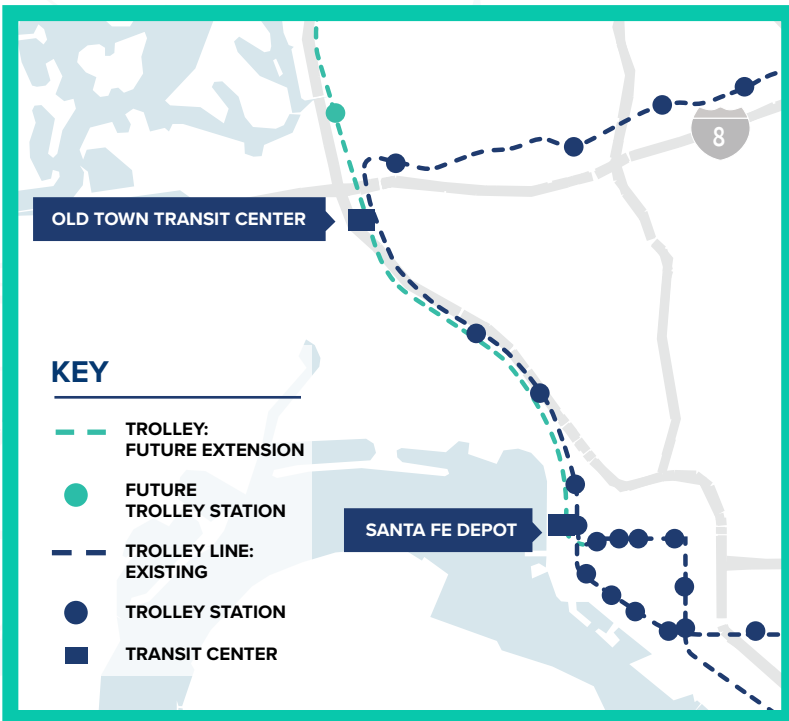
DRIVE TIMES DURING PEAK HOURS TO



COASTER TIMES TO



DOWNTOWN TROLLEY LINE CLOSE UP





PROJECT AVAILABILITIES

Suite	S.F.	Location	Description
700	2,218	South	5 offices, 3 cubicles, reception area, fileroom
707	1,343	South	4 offices, 1 big office/conf, reception area, 2 doorways
709	977	South	2 offices, big reception area
711	855	South	2 offices, open reception area, kitchenette
712/714	2,829	East	7 offices, reception area, conference rm, kitchen
713	445	East	big room
715	1,086	West	open space with sink
801	1,138	East	3 offices, 1 big open area/reception
805	1,521	South	VCT, 1 large office, 1 small interior office (carpet), large open area, and built-in countertop near entrance
807	820	West	2 offices, receptionist area
806/808	693	East	2 offices, 2 separate suite entrances, open area
809	538	West	1 office, storage room with built-in shelves, and open area
811	1,678	East	3 offices, reception area, kitchenette, open area
812	955	East	3 offices (1 is interior), open area, storage closet (bright)
813	246	West	1 room
814	869	East	3 offices, 2 separate entrances, storage area, closed waiting area, reception area, and open area
815	1,249	West	3 offices, 2 suite entrances, built-in cabinets, open area
817A	169		breakroom
817B	171		
817C	346		
817D	352		storage
900	1,114	West	3 offices, reception area
901	1,864	East	7 offices, reception area, fileroom area
905A	888	West	2-3 offices connected to 905
905	1,932	West	7 offices, 2 reception areas, kitchen, storage room
910	979	East	3 offices, 1 small room, reception/waiting area
913	884	West	3 offices, reception area, storage room
914	877	West	3 offices, reception area,
915	1,628	West	3 offices, reception area, kitchen
918	1,297	East	5 offices, reception area, 1 closet
1000	3,156	South/west	8 offices, reception area, open area
1002	1,958	north/east	5 offices, reception area, kitchen, fileroom
1010	147	East	1 room

PROJECT AVAILABILITIES

Suite	S.F.	Location	Description
1012	1,208	East	4 offices, reception area/open space
1013	868	West	3 offices, reception area/open space
1015	1,398	West	2 offices, open space, closet
1017	1,126	West	storages with metal fence
1100	7,277	West	21 offices, 2 reception areas, kitchen, closet
1101	2,819	West	10 offices, reception/open area, kitchen
1112	1,322	East	Open space with wall dividers
1201	1,517	West	4 offices, kitchenette, reception/open area
1202	4,206	East	10 offices, reception/open area, kitchen
1209	1,321	South/west	4 offices, reception area
1300	11,178	West/East	30 offices, 2 conference rooms, 2 reception area, kitchen, restrooms, shower
1400	2,400	South/West	5 offices, kitchen, reception area
1402	1,512	East	4 offices, kitchen, reception area, fileroom
1407	1,624	South/west	5 offices, Lobby area, reception area
1410	864	East	1 office, reception area
1411	1,074	West	3 offices, reception area, storage room
1414	1,819	West	5 offices, kitchen, reception area
1415	1,445	West	3 offices, conference room, reception area, kitchen
1500	1,142	West	2 offices, supply room, reception area
1502	2,472	East (Kitchen)	5 offices with windows, D/D entrance and separate entry way, reception area w/ low wall, closed waiting area, telephone closet, kitchen
1503	1,941	West (Kitchen)	4 offices, closed waiting area, large open area with built-in counters, kitchen
1504	1,669	East (Kitchen)	3 offices, conference room, reception area with built-in counters, storage room with built-in shelves, kitchen w/ upper & lower cabinetry
1515	4,227	West (Kitchen)	10 offices, kitchen, conference room, reception area,
1600	10,739	East/West	12 classrooms, 9 offices/storage rooms, kitchen/lounge
1702	3,266	East (Kitchen)	6 offices, D/D entrance w/ 2 other separate entrances, kitchen with built-in shelves, closed waiting area, closed reception area w/ built-in shelves, large open area
1707	2,871	West	4 offices, 2 conference rooms, 2 file rooms, reception area, kitchen
1709	1,676	West	5 offices, reception area
1711	1,629	West (Kitchen)	4 offices, 2 separate entrances, kitchen, reception area, storage room
1800	516	South	1 office, open area, D/D entrance, built-in shelves

PROJECT AVAILABILITIES

Suite	S.F.	Location	Description
1803	2,143	South	4 offices, D/D entrance, storage area, waiting area, reception area, large open area
1810	3,955	East	9 offices, 1 conference rm, reception, kitchen, open storage
1811	1,325	West	4 offices, reception area, kitchen
1815	1,212	West	4 offices, reception area, waiting area
1901	3,032	South/West	4 offices, kitchen, reception area, balcony
1902	1,430	East	3 offices, conference room with glass windows, built-in bookshelves
1903	2,243	East	6 offices, reception, kitchen
1904	1,466	West	5 offices, built-in shelves in one office, all have ceiling-down windows
1905	2,686	West	6 offices, conference room, built-in shelves, cubicle area, storage room, waiting area, closed reception room
2001	1,412	West	5 rooms - 3 with windows, kitchenette, open reception area
2002	1,920	East	3 offices, board room, recept.area, Lobby & kitchen
2010	914	East	3 small offices, reception area, closet
2018	2,516	West (Kitchen)	6 offices, conference room, 2 entry ways, open area, and kitchen
2019	208	Interior Office	Space Available
2100	3,597	East	5 offices, open back area, kitchen, conference room, reception area
2102	1,515	East	1 big open room
2105	1,914	South/West	4 offices (3 windows, 1 balcony) open recep/kitchen
2108	1,809	East	5 offices (1 is interior), conference room ,and open area
2112	831	East	3 offices (1 is interior), storage closet, open area
2200	2,430	South/West	4 offices, conference room, kitchen, reception areas
2201	1,593	West	5 offices, reception area
2204	1,438	East	3 offices, kitchenette, reception area
2205	2,516	West	6 offices, conference room, kitchen, supply area, reception area
2206	916	East	3 rooms (1 is interior & has built-in bookshelves), storage room, closed reception area and small open area with low wall
2208	920	East	3 offices (1 is interior), closed reception area, storage room, open area with low wall
2210	922	East (Kitchen)	3 offices (1 is interior), open area, storage room with kitchen
2300	3,264	South/west	5 offices, 1 conference room, 2 file rooms, kitchenette, reception area,
Total Currently Vacant	164,475		

LEASING TEAM

www.110westc.com

RICHARD GONOR

+1 858 410 1243

richard.gonor@am.jll.com

RE license #01142178



Although information has been obtained from sources deemed reliable, neither Owner nor JLL makes any guarantees, warranties or representations, express or implied, as to the completeness or accuracy as to the information contained herein. Any projections, opinions, assumptions or estimates used are for example only. There may be differences between projected and actual results, and those differences may be material. The Property may be withdrawn without notice. Neither Owner nor JLL accepts any liability for any loss or damage suffered by any party resulting from reliance on this information. If the recipient of this information has signed a confidentiality agreement regarding this matter, this information is subject to the terms of that agreement. © 2020 Jones Lang LaSalle IP, Inc. All rights reserved. Jones Lang LaSalle Brokerage, Inc., Real estate license #01856260